

MAMS Project

Medical Astronaut Monitoring System

- ▶ What is the MAMS Application?
- ▶ Bluetooth Specifics
- ▶ Software Development
- ▶ Bluetooth and the MAMS Application
- ▶ Future of Bluetooth

Phillip Fultz
Ryan Hollinger

What is the MAMS Application?

- **Data Link to Communicate Vital Signs and Equipment Status**
- **Full Duplex Voice Communication**
- **Simulates the Collection of Data and Voice**

Bluetooth Specifics

- **How did Bluetooth come about?**
 - **Need for Low Power/ Low Cost Wireless Solution**
- **What Advantages Does Bluetooth Provide?**
 - **Expansion of the PAN**
 - **Benefits Over IEEE 802.11**

Bluetooth Specifics...

- Hardware Capabilities

 - Range is from 10m – 100m

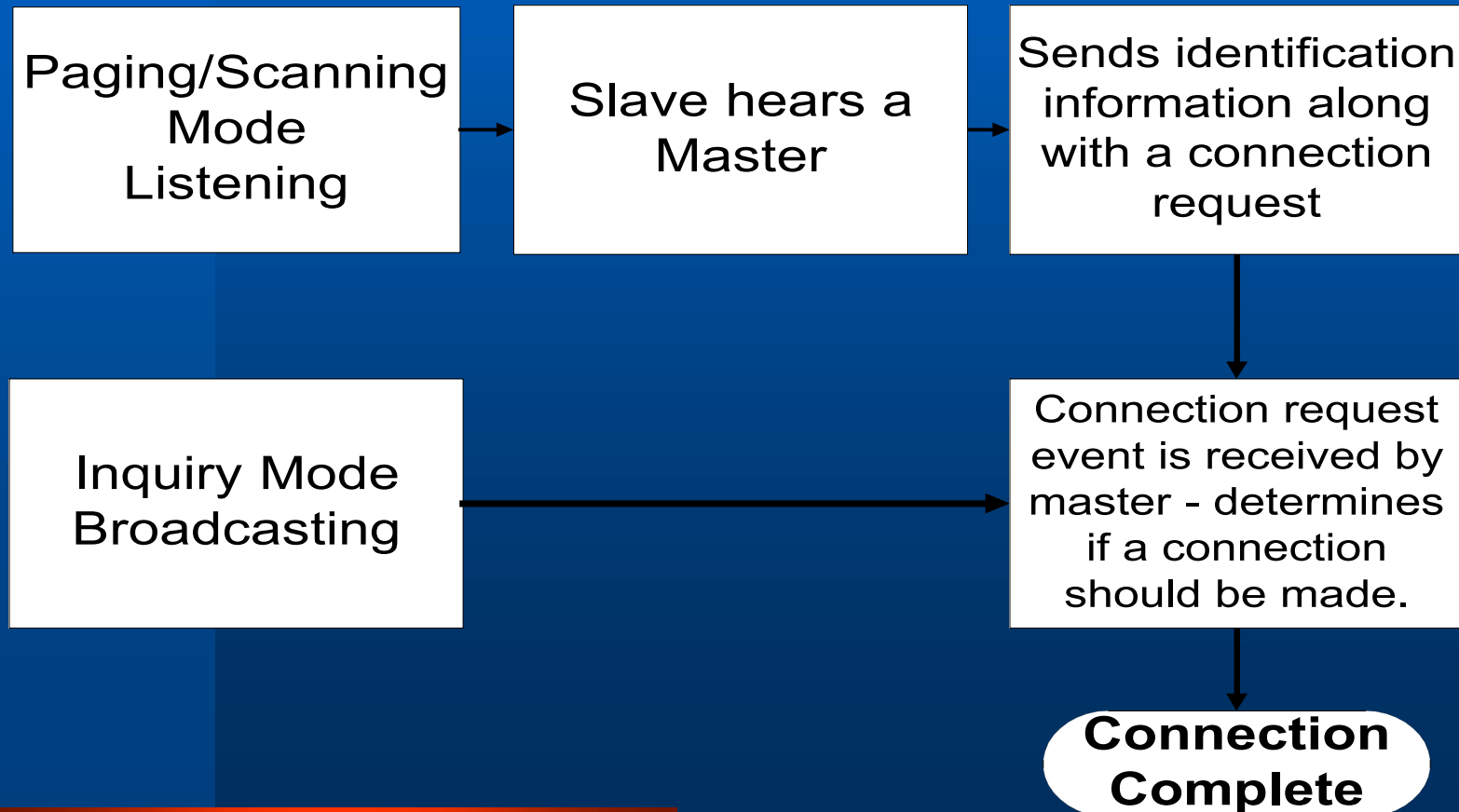
 - On board error correction

 - Frequency band between 2.4 – 2.48GHz

 - Frequency Hopping Spread Spectrum

More on Bluetooth Specifics

The Master/Slave Concept – How do the Boards Connect?

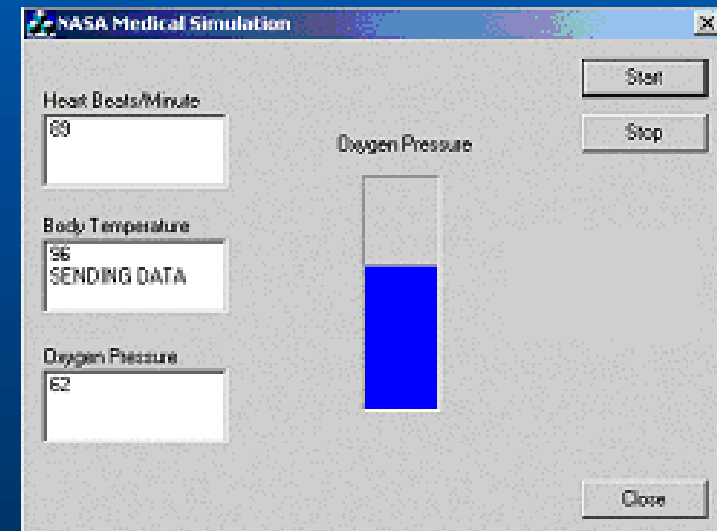


Software Development

Bluetooth Communication Software

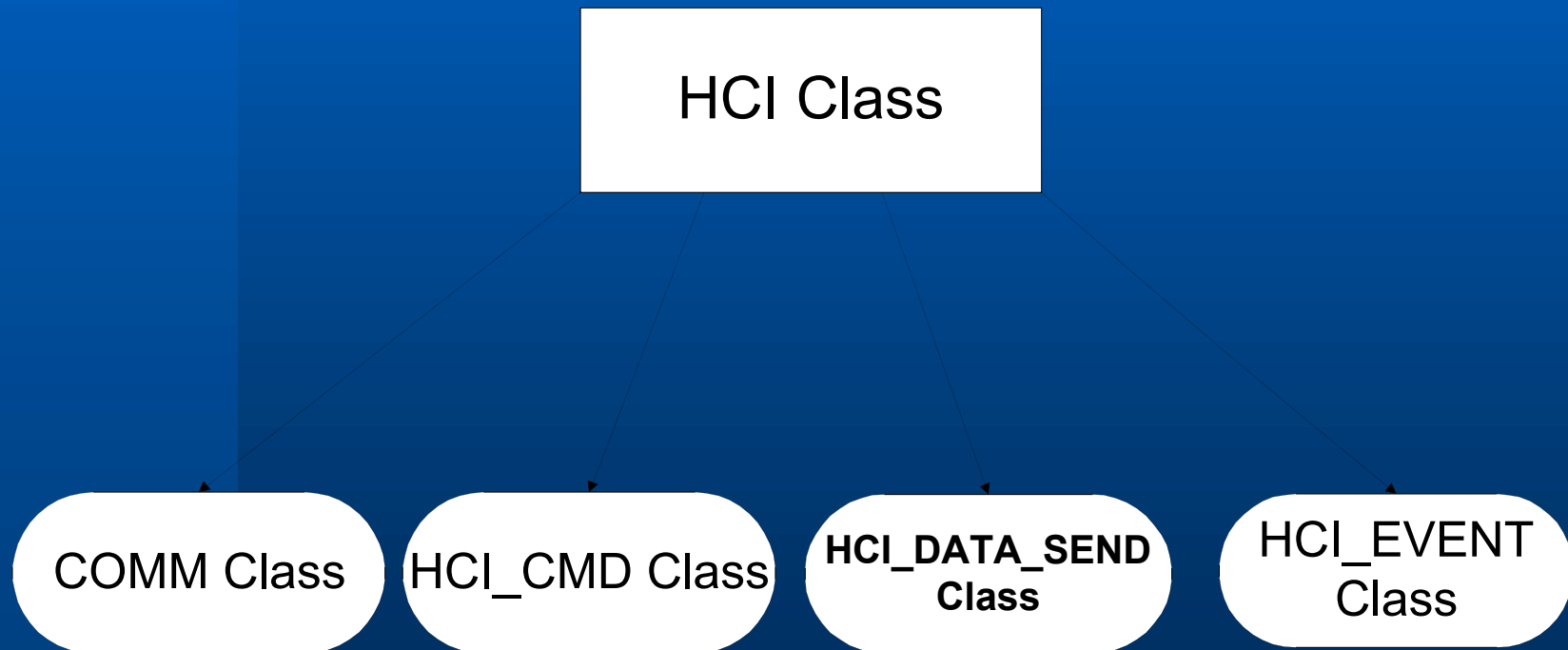


GUI Software



Bluetooth Communication Software

Class Design



GUI Software

- **MFC Design**

- **Master Application (MAMS)**

- **Single thread that polls and blocks for data**

- **Slave Application (NASA Simulation)**

- **Three threads, reading data generated by a file to simulate the vital signs**

Bluetooth and the MAMS Application

- **NASA Simulators represent the vast PAN that Bluetooth technology will support**
- **MAMS Application will be used to monitor astronauts while in space**

Future of Bluetooth

- **Space Applications**

- **Target Price for a Bluetooth Chip ~ \$1.50**

- **Embedded Application (Networking)**
- **Handheld Solutions**
- **Endless Possibilities**

QUESTIONS?